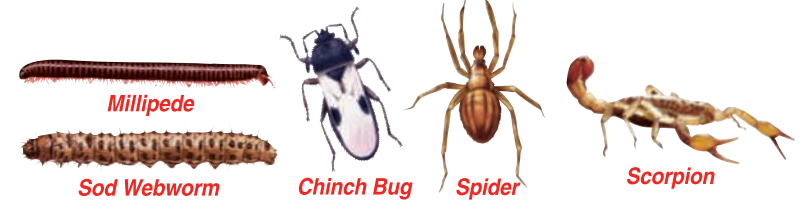


27.287mm
1.0743"
121mm/4.7638"
105mm/4.1339"
121.24mm/4.7732"
C/L of Print
133.76mm/5.2661"
105mm/4.1339"
121.25mm/4.7736"
14.785mm
.5821"

RIGHT BACK PANEL
ON FINISHED BAG



Flowers and Shrubs (Ornamental Plantings) in Landscape and Foundation Plantings

Pests	Pounds of This Product / 1000 sq. ft.	Specific Directions
Ants (except harvester, pharaoh and carpenter ants), Armyworms, Centipedes, Crickets, Cutworms, Earwigs, Firebrats, Silverfish, Spiders	2.25 to 5	Application to wet foliage during periods of high humidity may cause fungi to develop on foliage. Using a spreader, apply granules in a first coat around the base of the plant and in a second coat adjacent to the base. Treated area must be thoroughly watered after application to prevent the granules from being washed off. Do not use on plants above chest height.
Fleas	7 to 9	Repeat or reapply as often as needed but do not apply more often than once every 7 days. Do not use on plants above chest height.
Scorpions	5	
Ticks	1-15	

Will kill target pests that are present only at the time of application. Pests must be directly contacted for product to be effective.

Nuisance Pests Around the Outside of Homes, Porches, and Patios

To Kill Fleas: Apply granules at the rate of 4-9 lbs. per 1000 sq. ft.

To Kill Scorpions: Apply granules at the rate of 5 lbs. per 1000 sq. ft.

To Kill Ants: Apply granules at the rate of 5 lbs. per 1000 sq. ft.

To Kill Nuisance Pests (harvest and carpenter ants, centipedes, crickets, earwigs, firebrats, millipedes, silverfish, spiders, scorpions): Using granules, apply granules in a first coat around the base of the plant and in a second coat adjacent to the base. Treated area must be thoroughly watered after application to prevent the granules from being washed off. Do not use on plants above chest height.

Nuisance Pests in Urban Gardens, Vegetables, and Strawberries

Will kill insects (except harvest and carpenter ants, centipedes, crickets, earwigs, firebrats, millipedes, silverfish and scorpions) apply granules with a spreader at the rate of 4-9 lbs. per 1000 sq. ft.

To Kill Fleas: Apply granules at the rate of 4-9 lbs. per 1000 sq. ft.

To Kill Scorpions: Apply granules at the rate of 5 lbs. per 1000 sq. ft.

To Kill Ants: Apply granules at the rate of 5 lbs. per 1000 sq. ft.

To Kill Nuisance Pests (harvest and carpenter ants, centipedes, crickets, earwigs, firebrats, millipedes, silverfish and scorpions): Using granules, apply granules in a first coat around the base of the plant and in a second coat adjacent to the base. Treated area must be thoroughly watered after application to prevent the granules from being washed off. Do not use on plants above chest height.

Crop	Application Rate (lbs./1000 sq. ft.)	Maximum Number of Applications (per 1000 sq. ft.)	Interval Days	PHI (Days)	Comments
Asparagus (open)	2.3	6.0	3	1	1 Total maximum seasonal application rate is 11.5 lbs. per 1000 sq. ft. per crop. The total number of applications is 3 prior to harvest with 2 additional applications only to terms after harvest is open.
Asparagus (tunn.)	2.3	4.0	3	1	1 Total maximum seasonal application rate is 11.5 lbs. per 1000 sq. ft. per crop. The total number of applications is 3 prior to harvest with 2 additional applications only to terms after harvest is open.
Edible-podded legumes (beans, peas, lentils, etc.)	1.7	6.0	7	3(21)	2 Total number of applications per crop can be 4. Use on succulent peas or beans is prohibited.
Garden beans (fava), Carrots, Parsnips, Rutabagas, Turnips, Celery, Squash, Potatoes, Tomatoes, Peas, etc.	12-20	6.0	7	7	7 Total number of applications per crop can be 6 or more of which must be before the maximum single application rate.
Broccoli, Brussels Sprouts, Cabbage, Cauliflower, Chard, Kohlrabi, Mustard greens	17-23	6.0	7	3(14)	3 Total number of applications per crop can be 4. Apply granules to the plants of the crop 30 days or more prior to harvest.
Cucumber, melon, Squash	1.2	6.0	7	3	3 Total number of applications per crop can be 3.
Garden (open)	2.3	6.0	7	14	14 Total number of applications per crop can be 14.
Potatoes	2.3	6.0	7	7	7 Total number of applications per crop can be 7.
Strawberry	2.3	11.5	7	7	7 Total number of applications per crop can be 7.
Tomato, Pepper, Eggplant	2.3	9.2	7	3	3 Total number of applications per crop can be 3.

Sevin[®] Lawn Insect Granules are applied using a ground sprayer. Sprayers and settings are found in the table below. Do not repeat applications more often than indicated above.

Spreader	Type	Rate (lbs./1000 sq. ft.)	Setting
Scotts [®] PrecisionGreen [®] P4	Drop	2.25 4.6 6.8 9.2	6 11 14 16.5
Oxylone [®] Rotary	Rotary	2.25 4.6 6.8 9.2	5 6 8 NA
Earthway [®] Rotary	Rotary	2.25 4.6 6.8 9.2	14 18 27 NA
Earthway [®] Ev-N-Spread [®]	Rotary	2.25 4.6 6.8 9.2	14 18 27 NA
Republic E2	Drop	2.25 4.6 6.8 9.2	9 13 13 13
Scotts [®] SpeedyGreen [®] 3000	Rotary	2.25 4.6 6.8 9.2	NA NA NA NA
Craftsman [®] Rotary (H185)	Rotary	2.25 4.6 6.8 9.2	10 10 10 NA
Precision E2 Spread 8550	Rotary	2.25 4.6 6.8 9.2	9 9 9 NA
Purcell's [®] Star-Green [®] SB4500	Drop	2.25 4.6 6.8 9.2	3.2 3.2 3.2 NA
Agri-Fab [®] 8500 Spreader Model # 452123062	Rotary	2.25 4.6 6.8 9.2	8 7 7 10
Craftsman [®] Model # 486-19160	Drop	2.25 4.6 6.8 9.2	5 5 5 5.25
Scotts [®] Accugreen [®] Model # 3	Drop	2.25 4.6 6.8 9.2	8 12 12 12
Scotts [®] SpeedyGreen [®] Model 1000	Rotary	2.25 4.6 6.8 9.2	3.75 3.75 3.75 7

NA: Not applicable, no setting for this rate.

NOTICE: Research and testing have determined that the "Directions For Use" are appropriate for the proper use of this product under expected conditions. To the extent consistent with applicable law, the Buyer assumes responsibility for lack of performance or safety if not used according to the directions.

FACE PANEL



GARDENTECH

Sevin[®]

Lawn Insect Granules



Kills Over 30 Listed Pests

On Lawns, Ornamentals, And Around Homes

Covers Up To 4,292 Sq. Ft.

KEEP OUT OF REACH OF CHILDREN
CAUTION

See Back Panel For Precautionary Statements

ACTIVE INGREDIENT:
Carbaryl... 2.0%

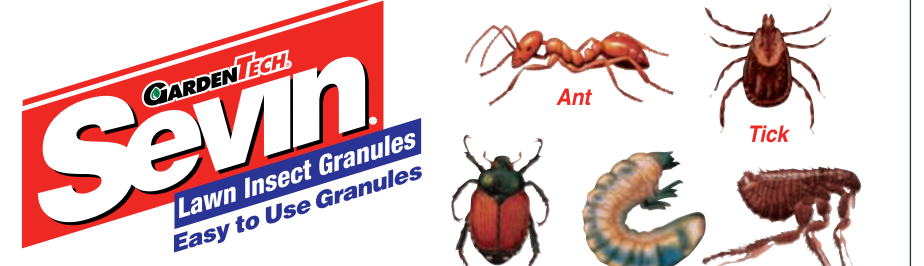
OTHER INGREDIENTS... 98.0%

TOTAL... 100.0%

*CAS Number 63-25-2

NET WEIGHT 10 lbs. (4.54 kg.)

LEFT BACK PANEL
ON FINISHED BAG



Sevin[®] Lawn Insect Granules

FOR OUTDOOR RESIDENTIAL USE ONLY

FIRST AID

This product is a N-methyl carbamate and is a cholinesterase inhibitor.

- **If Swallowed:** Call poison control center or doctor immediately for treatment advice. Have person sip a glass of water if able to swallow. Do not induce vomiting unless told to do so by the poison control center or doctor. Do not give anything by mouth to an unconscious person.
- **If on Skin or Clothing:** Take off contaminated clothing. Rinse skin immediately with plenty of water for 15-20 minutes. Call a poison control center or doctor for treatment advice.
- **If in Eyes:** Hold eye open and rinse slowly and gently with water for 15-20 minutes. Remove contact lenses, if present, after the first 5 minutes, then continue rinsing eye. Call a poison control center or doctor for treatment advice.

NOTICE TO USER:

Have the product container or label with you when calling a poison control center or doctor, or going for treatment. You may also contact 1-800-428-4247 for emergency treatment information.

NOTE TO PHYSICIAN: CARBARYL is an N-methyl carbamate insecticide which is a cholinesterase inhibitor. Specific antidote consists of atropine, Narcanol and other sedatives should not be used. Drugs like 2-PAM (pyridine-2-aldoxime methiodide) are not recommended.

PRECAUTIONARY STATEMENTS

HAZARDS TO HUMANS & DOMESTIC ANIMALS

CAUTION

Harmful if swallowed. Harmful if absorbed through skin. Avoid contact with eyes, skin or clothing. Wear long-sleeved shirt and long pants, and shoes plus socks and chemical resistant gloves (nitrile or latex rubber gloves) when handling this product. Remove clothing immediately if pesticide gets inside. Then wash thoroughly and put on clean clothing. Wash hands before eating, drinking, chewing gum, tobacco, or using the toilet. Remove contaminated clothing and wash before reuse.

DIRECTION FOR USE

It is a violation of Federal law to use this product in a manner inconsistent with its labeling. Read Entire Label Before Using This Product.

Strictly follow all label directions and restrictions.

Restrictions: Do not allow people or pets to enter the treated area until dusts have settled. Do not allow people (except those involved in the watering-in) or pets to enter the treated area until the watering-in is completed and the area has dried. Do not apply this product in a way that will contact any person or pet, either directly or through drift. Keep people and pets out of the area during application.

STORAGE AND DISPOSAL

Do not contaminate water, food, or feed by storage or disposal.

Pesticide Storage: Store in original container in a cool, dry place away from children and animals. Avoid excess heat.

Pesticide Disposal: If empty: Non-refillable container. Do not reuse or refill this container. Offer for recycling if available. Place in trash or offer for recycling if available. If partially filled: Call your local solid waste agency or 1-866-945-5033 for disposal instructions. Never place unused product down any indoor or outdoor drain.

LIMITS

Use when insects first appear and re-treat as necessary. Repeat applications as necessary up to a total of 4 times per year but no more than once every 7 days.

Pests	Pounds of This Product / 1000 sq. ft.	Comments
Ants (except for vesper, pharaoh and carpenter ants), Armyworms, Centipedes, Chiggers, Chinch Bugs, Cutworms, Earwigs, Green June beetle, Larvae, Leafhoppers, Locusts, Millipedes, Mosquitoes, Nymphs, Saw fly larvae, Japanese beetle, Green June beetle, Japanese beetle, Green June beetle, Sooty webworm (sawfly larva), Spotted lanternfly, Springtails, Silverfish, etc.	2.25	Product must be watered in immediately following application.
Ants (other than vesper, pharaoh and carpenter ants), Centipedes, Crickets, Earwigs, Green June beetle, Larvae, Leafhoppers, Locusts, Millipedes, Mosquitoes, Nymphs, Saw fly larvae, Japanese beetle, Green June beetle, Sooty webworm (sawfly larva), Spotted lanternfly, Springtails, Silverfish, etc.	5	For heavy infestations of Chinch bugs, increase rate to 5 lbs per 1000 sq. ft. and treat the entire area.
Scorpions	5	To effectively kill subsurface pests, apply when insects have actively feeding near the soil surface, usually during late March through May, or July through early September, or as guided by local agricultural extension service agents.
Ticks	7-9	
Fleas	7-9	
Grubs	1-15	

Will kill target pests that are present only at the time of application. Pests must be directly contacted for product to be effective.

Ticks That May Vector Lyme Disease

To Kill Ixodes and other ticks: Apply granules at the rate of 2.25 to 10 lbs. per 1000 sq. ft. to the lawn and lawn edges. Water granules immediately following application. Do not apply this product in a way that will contact any person or pet, either directly or through drift. Keep people and pets out of the area during application.

EPA Reg. No. 425-1212-1004

EPA Est. 67572-GA-1, 67572-GA-2, 59144-GA-1

Product of China, contains U.S. and imported ingredients.

Subscript used is first letter of run code on container.

GARDENTECH

Distributed by: TechPac, LLC.
Suite 700
Atlanta, GA 30339

Sevin is a trademark of Tarnow-Kent, Inc. Gardentech is a registered trademark of Gardentech, Inc. Speedy Green is a registered trademark of Scotts International, Inc. Republic E2 is a trademark of Republic, Inc. Oxylone is a registered trademark of Oxylone Products, Inc. Earthway and Earthway Ev-N-Spread are trademarks of U.S. Corp. Agri-Fab is a registered trademark of Agri-Fab, Inc. Craftsman is a registered trademark of Sears, Roebuck and Co.



WARNING: This product contains carbaryl, a chemical known to the State of California to cause cancer and reproductive harm in laboratory animals.

GARDENTECH

Sevin[®]

Lawn Insect Granules

For Use On Vegetables!

29.5"

Eyemarks: 9628" x .25"
.09" from edge