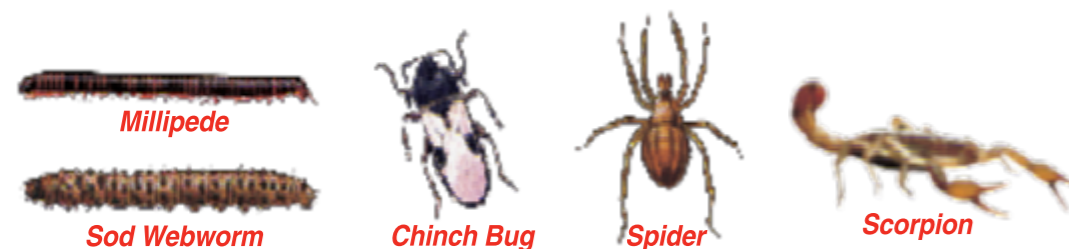


RIGHT BACK PANEL ON FINISHED BAG



Pests	Pounds of This Product / 1000 sq. ft.	Specific Directions
Ants (except harvester, pharaoh and carpenter ants), Armyworms, Centipedes, Crickets, Cutworms, Earwigs, Firebrats, Silverfish, Spiders	2.25 to 5	Application to wet foliage during periods of high humidity may cause injury to tender foliage. Using a spreader, apply granules in a 6-foot band around the home. To attack and lowerdown foundations, ornamental plantings and lawn or soil areas immediately adjacent to the home, treated area must be thoroughly watered after application to remove the chemical from the granules.
Flies	7 to 9	Repeat as needed up to 3 times per year but do not apply more often than once every 7 days. Do not use on plants above chest height.
Scorpions	5	
Ticks	1.15	

Will kill target pests that are present only at the time of application. Pest must be directly contacted for product to be effective.

Nuisance Pests Around the Outside of Homes, Porches, and Patios

To Kill Fleas: Apply granules at the rate of 4-6 lbs. per 1000 sq. ft.
 To Kill Ticks: Apply granules at the rate of 1.15 lbs. per 1000 sq. ft.
 To Kill Scorpions: Apply granules at the rate of 5 lbs. per 1000 sq. ft.

To Kill Ants (except harvester, pharaoh and carpenter ants), Armyworms, Centipedes, Crickets, Cutworms, Earwigs, Firebrats, Millipedes, Silverfish Spiders, Spiders: Using a spreader, apply granules uniformly in a 6-foot band around the outside perimeter of home. Apply granules at the rate of 2-5 lbs. per 1000 sq. ft. To kill ants and other pests, foundations, ornamental plantings and lawn and soil areas immediately adjacent to the home. Treated area must be watered immediately after application to remove the chemical from the granules. Repeat application as necessary up to a total of 4 times per year, but not more often than once every 7 days. Will kill target pests that are present only at the time of application. Pest must be directly contacted for product to be effective.

Nuisance Pests in Listed Garden Vegetables and Strawberries

To Kill Ants (except harvester, pharaoh and carpenter ants), centipedes, crickets, cutworms, earwigs, grasshoppers, millipedes, sowbugs (pillbugs) and springtails apply granules with a spreader at the rate given below. Water lightly after application to release the chemical from the granules. Begin applications when insects or damage first observed and repeat as directed below. Will kill target pests that are present only at the time of application. Pest must be directly contacted for product to be effective.

Reinsect intervals (days between treatments) and other restrictions are listed below.

Preharvest Use Limitation: Observe the listed preharvest intervals (number of days between the last application and harvest) for application during the 2009 season.

Crop	Application Rate (lbs./1000 sq. ft.)	Maximum Yearly Application Rate (lbs./1000 sq. ft.)	Reinsect Interval (Days)	PHI (Days)	Comments
Asparagus (green)	2.3	6.9	3	1	Total maximum seasonal application rate is 11.5 lbs. per 1000 sq. ft. per crop. The total number of applications is 3 prior to harvest with 2 additional applications only to ferns, after harvest of spears.
Asparagus (fern)	2.3	6.9	7	1	
Edible-podded legume vegetables including snap beans, wax beans, arborling bean, jack bean, edible-pod pea, cowpea, soy, soybean, chickpea, lentil, broad bean, lima bean (dry), navy bean, cranberry bean, kidney bean, black-eyed pea, cowpea, mung bean, southern pea, lentil (dry)	1.7	6.9	7	3(EP) 21(D)	EP = edible-podded D = dried Total number of applications per crop can be 4. Use on succulent peas or beans prohibited.
Garden beetle (root), Carrots, Parsnips, Radishes, Turnips, Rutabaga, Salsify, Turnips (root)	1.2-2.3	6.9	7	7	Total number of applications per crop can be 6 (one of which must be lower than the maximum single application rate)
Broccoli (sprout), Broccoli, Cabbage, Cauliflower, Chinese Cabbage, Cucumber, Kohlrabi, mustard greens	1.7-2.3	6.9	7	3(A) 14(B)	A = Broccoli sprouts, Broccoli, Cabbage, Cauliflower & Chinese Cabbage, Kohlrabi, Cucumber, mustard greens Total number of applications per crop can be 4 (one of which must be lower than the maximum single application rate). Application is only permitted within 30 days of crop emergence or the date of transplanting.
Cucumber, melon, Squash	1.2	6.9	7	3	Total number of applications per crop can be 6
Garden Beet (top), Tomatoes	2.3	6.9	7	14	Total number of applications per crop can be 3
Potatoes	2.3	6.9	7	7	Total number of applications per crop can be 3
Strawberry	2.3	11.5	7	7	Total number of applications per crop can be 3
Tomato, Pepper, Eggplant	2.3	9.2	7	3	Total number of applications per crop can be 4

Sevin® Lawn Insect Granules are applied using a ground spreader. Spreader and settings are found in the table below. Do not repeat applications more often than indicated above.

Spreader	Type	Rate (lbs/1000 ft ²)	Setting
Scotts® PrecisionGreen® P-4	Drop	2.25 4.6 6.8 9.2	8 11 16 16.5
Dyclone® Rotary	Rotary	2.25 4.6 6.8 9.2	5 9 8 8
Earthway® Rotary	Rotary	2.25 4.6 6.8 9.2	14 16 22 27
Earthway® E-V-Spread®	Rotary	2.25 4.6 6.8 9.2	14 18 27 NA
Republic® EZ	Drop	2.25 4.6 6.8 9.2	9 12 13 13
Scotts® SpeedyGreen® 3000	Rotary	2.25 4.6 6.8 9.2	8 NA NA NA
Cushman® Rotary (1185)	Rotary	2.25 4.6 6.8 9.2	6 10 15 NA
Precision® EZ Spread S8550	Rotary	2.25 4.6 6.8 9.2	7 9 NA NA
Pursh® S16-Green® SB4500	Drop	2.25 4.6 6.8 9.2	3 4 4 4
Agri-Fab® 80lb Spreader Model # 450212062	Rotary	2.25 4.6 6.8 9.2	6 7 8 10
Cushman® Model #86-19780	Drop	2.25 4.6 6.8 9.2	5 5 7 7
Scotts® Accupreen® Model #620	Drop	2.25 4.6 6.8 9.2	8 9 12 12
Scotts® SpeedyGreen® Model 1000	Rotary	2.25 4.6 6.8 9.2	7 7 7 7

NA: Not applicable, no setting for this rate.

NOTICE: Research and testing have determined that the "Directions for Use" are appropriate for the proper use of this product under expected conditions. To the extent consistent with applicable law, the Buyer assumes responsibility for safe performance or safety if not used according to the directions.

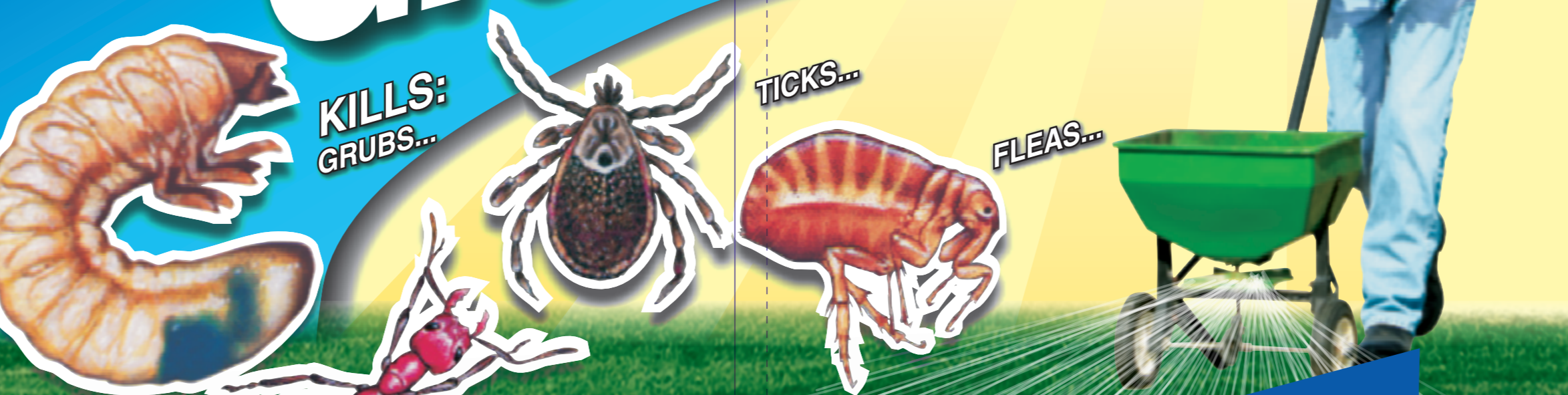
FACE PANEL



GARDENTECH®

Sevin®

Lawn Insect Granules



Kills Over 30 Listed Pests

On Lawns, Ornamentals, And Around Homes

Covers Up To 8,600 Sq. Ft.

KEEP OUT OF REACH OF CHILDREN
CAUTION

See Back Panel For Precautionary Statements

NET WEIGHT 20 lbs. (9.08 kg.)

ACTIVE INGREDIENT: Carbaryl..... 2.0%

OTHER INGREDIENTS..... 98.0%

TOTAL..... 100.0%

*CAS Number 63-25-2

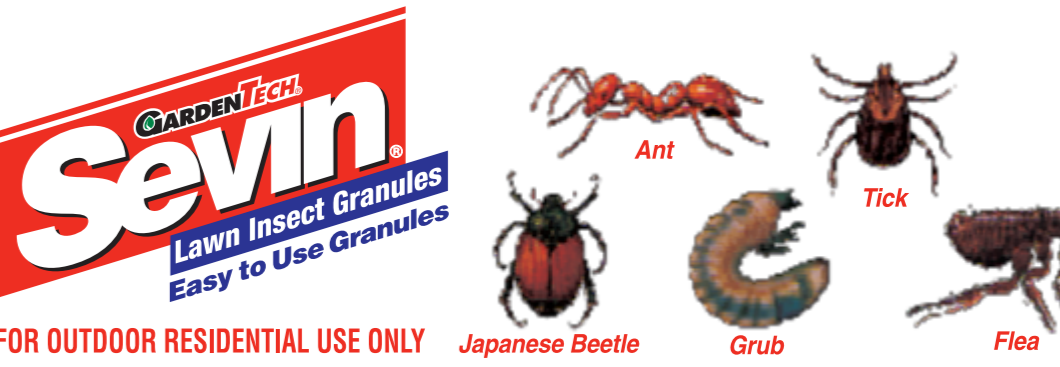
GARDENTECH®

Sevin®

Lawn Insect Granules

For Use On Vegetables!

LEFT BACK PANEL ON FINISHED BAG



FOR OUTDOOR RESIDENTIAL USE ONLY

FIRST AID

If Swallowed:

- Call poison control center or doctor immediately for treatment advice.
- Have person sip a glass of water if able to swallow.
- Do not induce vomiting unless told to do so by the poison control center or doctor.
- Do not give anything by mouth to an unconscious person.

If on Skin or Clothing:

- Take off contaminated clothing.
- Rinse skin immediately with plenty of water for 15-20 minutes.
- Call a poison control center or doctor for treatment advice.
- Hold eye open and rinse slowly and gently with water for 15-20 minutes.
- Hold eye open and rinse slowly and gently with water for 15-20 minutes, then continue rinsing eye.
- Call a poison control center or doctor for treatment advice.

If in Eyes:

- Hold eye open and rinse slowly and gently with water for 15-20 minutes, then continue rinsing eye.
- Call a poison control center or doctor for treatment advice.

HOTLINE NUMBER:

Have the product container or label with you when calling a poison control center or doctor, or going for treatment. You may also contact 1-800-426-5347 for emergency treatment information.

NOTE TO PHYSICIAN: CARBARYL is an N-methyl carbamate insecticide which is a cholinesterase inhibitor. Specific antidotes consist of atropine, Narcan and other sedatives should not be used. Drugs like 2-PAM (pyridine-2-aldolome methiodide) are not recommended.

PRECAUTIONARY STATEMENTS HAZARDS TO HUMANS & DOMESTIC ANIMALS

CAUTION

Harmful if swallowed. Harmful if absorbed through skin. Avoid contact with eyes, skin or clothing. Wear long-sleeved shirt and long pants, and shoes plus socks and chemical resistant gloves (household or latex rubber gloves) when handling this product. Remove clothing immediately if pesticide gets inside. Then wash thoroughly and get on clean clothing. Wash hands before eating, drinking, chewing gum, tobacco, or using the toilet. Remove contaminated clothing and wash before reuse.

This product is extremely toxic to aquatic invertebrates. Do not apply directly to water or allow drift to water. To protect the environment, do not allow pesticide to enter or run off into storm drains, drainage ditches, gutters or surface waters. Applying this product in calm weather when rain is not predicted for the next 24 hours will help to ensure that wind or rain does not blow or wash pesticide off the treatment area. Sweeping any product that lands on a driveway, sidewalk, or street, back onto the treated area of the lawn or garden will help to prevent run off to water bodies or drainage systems.

ENVIRONMENTAL HAZARDS

Do not apply directly to water or allow drift to water. To protect the environment, do not allow pesticide to enter or run off into storm drains, drainage ditches, gutters or surface waters. Applying this product in calm weather when rain is not predicted for the next 24 hours will help to ensure that wind or rain does not blow or wash pesticide off the treatment area. Sweeping any product that lands on a driveway, sidewalk, or street, back onto the treated area of the lawn or garden will help to prevent run off to water bodies or drainage systems.

RESTRICTIONS

Do not allow people or pets to enter the treated area until dusts have settled. Do not allow people (except those involved in the watering-in) or pets to enter the treated area until the watering-in is completed and the area has dried. Do not apply this product in a way that will contact any person or pet, either directly or through drift. Keep people and pets out of the area during application.

For outdoor use only. Do not apply by hand, spoon, or belly grinder. Product must be watered in immediately following application. Not for use on plants grown for sale or commercial use, research or commercial seed production.

STORAGE AND DISPOSAL

Do not contaminate water, food, or feed by storage or disposal. Pesticide Storage: Store in original container in a cool, dry place away from children and animals. Avoid excess heat. Pesticide Disposal: If empty, non-refillable container, do not reuse or refill this container. Offer for recycling if available. Place in trash or offer for recycling if available. If partly filled, call your local solid waste agency or 1-866-945-5033 for disposal instructions. Never place unused product down any indoor or outdoor drain.

LAWNS

Use when insects first appear and/or plant damage is imminent. Apply when air is calm. Repeat applications as necessary up to a total of 4 times per year but not more often than once every 7 days.

Pests	Pounds of This Product / 1000 sq. ft.	Comments
Ants (except harvester, pharaoh and carpenter ants), Armyworms, Centipedes, chiggers, Chinch Bugs, Cutworms, Earwigs, Grasshopper, European crane, Fall armyworm, Fairy skoper, Firechoppers, Green June beetle larvae, Leafhoppers, Lucerne moth, Millipedes, Mosquitoes (larvae), South beetle adults such as May beetle, June beetle, Japanese Beetle, Green June beetle, Sod webworm (larva), Sod webworm, Springtails, Yellow-striped armyworms	2.25	Product must be watered in immediately following application. For heavy infestations of Chinch bugs, increase rate to 5 lbs. per 1000 sq. ft. and treat the entire area. To effectively kill subterranean pests, apply when insects are actively feeding near the soil surface, usually during late March through May, or July through early September, or as guided by local agricultural extension service agents.
Billbug larvae, European crane fly larvae, Fleas, White grubs, Such as Japanese beetle larvae, Crane beetle larvae, Phylloxera spp. larvae, Animal white grubs, Black tortoise gramina beetle larvae, Hyperodes weevil (diapriid weevil larvae)	5	
Scorpions	5	
Flies	7-9	
Ticks	1.15	

Will kill target pests that are present only at the time of application. Pest must be directly contacted for product to be effective.

Ticks That May Vector Lyme Disease

To Kill juvenile and adult ticks (Doe Ticks and Black Legged Tick) and ticks (Long Star Tick) which may vector Lyme Disease: Apply granules at the rate of 1.15 pounds of product per 1000 sq. ft. with a spreader to ensure uniform coverage. Target applications to kill juvenile ticks (larvae and nymphs) in late spring or early summer. Male larvae, adult ticks can be killed with late summer and fall applications (August/October). Make applications to lawns, shrub beds, ornamental plantings, wooded areas and around outside perimeters of home and other buildings. Treat entire lawn and perimeter wooded areas and property boundaries where access to ticks may occur. Repeat insecticide applications after application to remove chemical from the granules and move down into thatch. Ticks may be reintroduced from surrounding areas or host animals. Repeat as necessary up to a total of 4 times per year, but not more often than once every 7 days. Will kill target pests that are present only at the time of application. Ticks must be directly contacted for product to be effective.

EPA Reg. No. 432-112-7100
 EPA Est. 67372-046-14, 67372-04-26, 59144-GA-14
 Subscriptor: add in first letter of run code on container.

Product of China, contains U.S. and imported ingredients

GARDENTECH®

Distributed by: TechPac, LLC.
 1000 Parkwood Circle
 Suite 700
 Atlanta, GA 30339

Sevin is a trademark or service mark of the Garden Tech Inc. Garden Tech is a registered trademark of TechPac, LLC. Garden, Inc. Accupreen, PrecisionGreen and Earthway are registered trademarks of TechPac, LLC. Earthway is a registered trademark of Earthway Products, Inc. SpeedyGreen and Pursh are trademarks of TechPac, LLC. Earthway and Earthway are registered trademarks of Agri-Fab, Inc. Cushman is a registered trademark of Cushman, LLC. Agri-Fab is a registered trademark of Agri-Fab, Inc. Cushman is a registered trademark of Cushman, LLC. For NEZEL, Emergency Call 24 Hours a Day 800-426-5347. For SPEEDYGREEN Emergencies Call 800-945-5033. For PRECISIONGREEN Emergencies Call 800-945-5033.

© 2013 TechPac, LLC.

WARNING: This product contains carbaryl, a chemical known to the State of California to cause cancer and reproductive harm in laboratory animals.

26.5 REPEAT

08221EE

EYE MARKS: 1.0" X .25" .125" FROM EDGE

37.4" (Web Width)

50" SEAL

50" SEAL