

RIGHT BACK PANEL ON FINISHED BAG

LEFT BACK PANEL ON FINISHED BAG

Table with 3 columns: Pest, Application Rate. Lists various insects like Aphids, Armyworms, and Beetles with their respective application rates.

SEVIN® Insect Killer Lawn Granules will provide control of the following pests at the application rates listed below:

SPECIFIC PEST INSTRUCTIONS:

Aphids: Mound Treatment...
Armyworms, Cutworms, and Sod Webworms: Irrigate the treated area with up to 1.0 inches of water...
Billbugs: Apply when adult billbugs are first observed during April and May...
Black Turfgrass Aeneas: Apply during May and July...
Chinch Bugs: Irrigate the treated area with up to 0.25 inches of water...
Flea Larvae: Irrigate the treated area with up to 0.5 inches of water...
Mole Crickets: Apply as late in the day as possible to moist soil...
Scorpions: Treat grass areas that receive pressure from adult rock crickets...
Spiders: Treat at dusk to prevent outdoor scorpions from entering the building...
Ticks: (Including ticks that transmit Lyme Disease and Rocky Mountain Spotted Fever)...

Table with 3 columns: Pests Controlled, Application Rate, PHI. Lists various pests like Fleas, Ticks, Mole Crickets, Grubs, and Chinch Bugs with their application rates and Pre-Harvest Intervals.

FIN SEAL 23.00" 504.2mm microdot

FIN SEAL 24 seal mm

Table with 3 columns: Pests Controlled, Application Rate, PHI. Lists various pests like Fleas, Ticks, Mole Crickets, Grubs, and Chinch Bugs with their application rates and Pre-Harvest Intervals.

Eye marks: .9828" x .25" .09" from edge

FACE PANEL

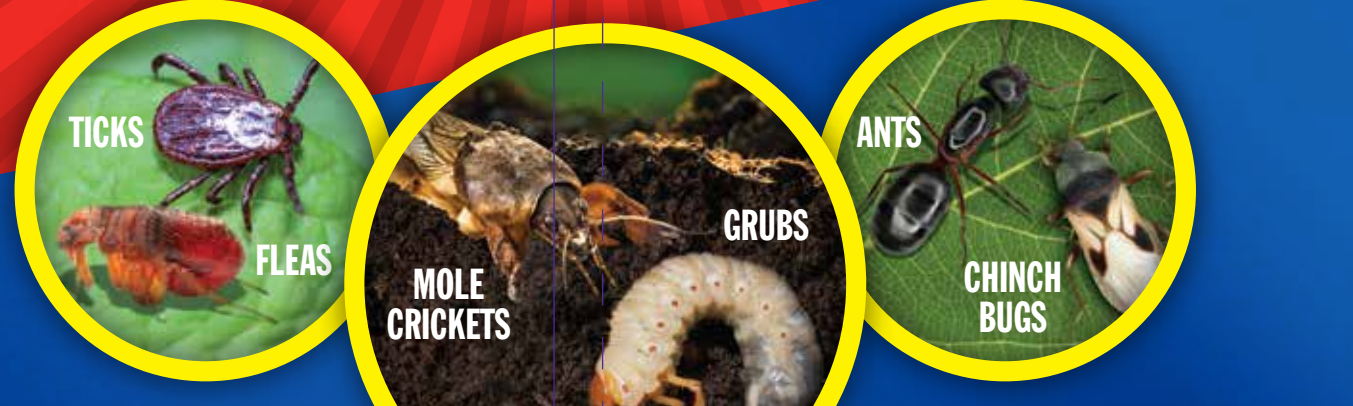
24 seal mm



**KILLS INSECTS BY CONTACT
KEEPS ON KILLING
UP TO 3 MONTHS**

sevin®
GARDEN TECH
INSECT KILLER
LAWN GRANULES
KILLS 100 INSECTS,
OVER 100 AS LISTED

GARDEN TECH
sevin®
INSECT KILLER
LAWN GRANULES



**KILLS 100 INSECTS,
OVER 100 AS LISTED**
FOR HOME
FRUIT & VEGETABLE GARDENS, ORNAMENTAL &
FLOWER GARDENS, LAWNS, AND AROUND THE HOME
WON'T HARM PLANTS, BLOOMS OR LAWN*
KILLS ABOVE & BELOW THE SURFACE

**KILLS INSECTS BY CONTACT
KEEPS ON KILLING
UP TO 3 MONTHS**

**KILLS INSECTS BY CONTACT
KEEPS ON KILLING
UP TO 3 MONTHS**



Active Ingredients:
Zeta-Cypermethrin* 0.029%
Bifenthrin** 0.115%
Other Ingredients: 99.856%
..... 100.000%

KEEP OUT OF REACH OF CHILDREN
CAUTION
See Back Panel For
Additional Precautionary Statements
and Directions for Use.

**TREATS UP TO
10,000 SQ.FT.**

**EASY TO USE
GRANULES**

Net Weight: 10 LB. (4.54 kg)

*When used as directed

TRUSTED BRAND FOR OVER 50 YEARS
QUICK FACTS
PRODUCT FACTS: Kills lawn-damaging insects that cause your lawn to thin and turn brown. Can be used as an outdoor barrier treatment.
WHERE TO USE: Fruit and Vegetable Gardens, Ornamental Plants and Shrubs, Flowers and Ground Covers, Around Structures, Lawns.
VEGETABLES & FRUITS: Protects over 175 listed fruits and vegetables: Tomatoes, Peppers, Zucchini, Sugar Snap Peas, Carrots, Blueberries, Grapes, Raspberries, Broccoli, Kale, Spinach, Cucumber, Pumpkin, Watermelon.
KILLS: Ants, Aphids, Armyworms, Fleas, Ticks, Beetles, Cutworms, Japanese Beetles, Chinch Bugs, Caterpillars, and other listed lawn & garden insects.
HOW TO USE: 1-4 lbs. per 1,000 square feet.

FIRST AID
If swallowed: Call poison control center or doctor immediately for treatment advice. Have person sip a glass of water if able to swallow. Do not induce vomiting unless told to do so by the poison control center or doctor. Do not get anything by mouth to an unconscious person.
If in eyes: Hold eye open and rinse slowly and gently with water for 15-20 minutes. Remove contact lenses, if present, after the first 5 minutes, then continue rinsing eye. Call a poison control center or doctor for treatment advice.
HOTLINE NUMBER: 1-800-424-9547
NOTE TO PHYSICIAN: This product is a pyrethroid. If large amounts have been ingested, the stomach and intestine should be irrigated. Treatment is symptomatic and supportive. Digestible fats, oils, or alcohol may increase absorption and so should be avoided. For information regarding the Use of this Product Call 1-866-945-9333.

PRECAUTIONARY STATEMENTS
CAUTION
Harmful if swallowed. Causes moderate eye irritation. Avoid contact with eyes or clothing. Prolonged or frequently repeated skin contact may cause allergic reactions in some individuals. Wear long-sleeved shirt and long pants, socks, shoes and gloves. Wash thoroughly with soap and water after handling and before eating, drinking, chewing gum, using tobacco or using the toilet.

ENVIRONMENTAL HAZARDS
This pesticide is extremely toxic to fish, aquatic invertebrates, oysters and shrimp. To protect the environment, do not allow pesticides to enter or run off into storm drains, drainage ditches, gutters or surface waters. Applying this product in calm weather when rain is not predicted for the next 24 hours will help to ensure that wind or rain does not blow or wash pesticide off the treatment area. Sweeping any product that lands on a driveway, sidewalk, or street, back onto the treated area of the lawn or garden will help to prevent run off to water bodies or drainage systems.

DIRECTIONS FOR USE
It is a violation of Federal law to use this product in a manner inconsistent with its labeling. Read the following "Directions for Use" carefully and only before applying this product.
Pesticide Disposal and Container Handling: In New York State, do make a single repeat application of this product if there are signs of renewed insect activity, but not later than six weeks after the first application.
Sevin® Insect Killer Lawn Granules is designed for use as a ready-to-use granular insecticide to control various adult and larvae above surfaces of lawns and gardens.
Preicide Disposal and Container Handling: If you have a medical emergency, need consultation on diagnosis, therapy and analysis please call (800) 424-9347. If you have a product spill or transportation emergency call (800) 424-9347.
For Consumer Return: TechPac, LLC PO Box 95437 Palestine, TX 76905-0037

STORAGE AND DISPOSAL
Pesticide Storage: Store in a cool, dry area. Always store pesticides in the original container. Store away from food and pet food. Nonrefillable container. Do not reuse or refill this container. If empty: Place in trash or other recycling facility. If partly filled: Call your local solid waste agency for disposal instructions. Never place unused product down any indoor or outdoor drain.

The Directions for Use of this product must be followed carefully. It is impossible to eliminate all risks inherently associated with the use of this product. To the extent permitted by applicable law, we agree to hold Seller harmless for any claims relating to such actions.

LAWN, PERMIETER, and GARDEN APPLICATIONS
Broadcast Application: Sevin® Insect Killer Lawn Granules to provide uniform coverage over the treatment area. Locate the listed pest to be controlled in the following table and follow the specified application rate to provide excellent control under typical conditions. When treating for multiple pests, apply the higher of the specified rates. Retreatment may be necessary to achieve and/or maintain control during periods of high pest pressure. Repeat application is necessary only if there are signs of renewed insect activity. Repeat application no more than once per 7 days. Do not exceed 4 lb per 1,000 ft² per application. Best results are obtained if the treated area is thoroughly watered immediately after application.
Residential Lawn Application: Broadcast this product with spreader equipment to ensure uniform coverage over the treatment area.
Perimeter Application: Apply to ground area 5 to 10 feet wide around and adjacent to the structure.
Ornamental & Flower Garden Application: Use this product as a spot treatment or area treatment for pest infestations on or around ornamental trees, shrubs, flowers and ground covers. Certain plants such as annuals may be sensitive to the watered-in granules. A limited area should be treated as observed for one week prior to application to the entire planting.
Fruit & Vegetable Garden Application: Apply this product to control listed pests in home fruit and vegetable gardens either as a preventative measure or to control existing infestations.
Preventative Application: This product may be applied just prior to planting or after plants emerge and worked into the top 4 to 6 inches of soil. Use 1 lb of product for a 1,000 sq ft area and immediately water the area thoroughly after application for best results.
Applications to Control Existing Infestations: Apply this product to the garden area using 1 to 4 lb of product for a 1,000 sq ft area. Best results are obtained if the treated area is thoroughly watered immediately after application. Treat when insects first appear and retreat as necessary.

SPREADER SETTINGS table with columns: Spreader, Rate (lb/1,000 ft²), Setting. Lists settings for Scotts® Turf Builder®, Edgeguard™, etc.

NOTE: Spreader settings are approximate. It is recommended that you calibrate your spreader before application since manufacturer's settings can vary among the same model of spreader.
Broadcast Spreader: If your lawn is rectangular, apply two border strips across each end for a turning area. If your lawn is an irregular shape, apply a border strip completely around it. Then apply product back and forth in the longest direction. Turn the spreader off and on at the edge of each strip to prevent uneven application. Overlay the throw pattern by about a foot to ensure complete coverage.
Drop Spreader: Apply granules with spreader going in the same direction as the longest part of the lawn. Apply two (2) header strips first. To ensure thorough coverage, make sure to overlap wheel marks. Shut off spreader when finished or when the header strips have been reached.

EPA Reg. No. 279-3346-71004
EPA Est. 67572-GA-1, 67572-GA-2
Subscript used is first letter of run code on container.
Distributed by:
TechPac, L.L.C.
1000 Parkwood Circle, Suite 700
Atlanta, GA, 30339

**KILLS INSECTS BY CONTACT
KEEPS ON KILLING
UP TO 3 MONTHS**

GARDEN TECH
sevin®
INSECT KILLER
LAWN GRANULES



**KILLS OVER 100 INSECTS,
AS LISTED**
TREATS UP TO 10,000 SQ.FT.

24 seal mm